

Finland on the multifund-way - steps, experiences, results

Senior Officer Sanna Sihvola
Ministry of Agriculture and
Forestry

13.9.2012 Gotha, Germany

14.9.2012



1

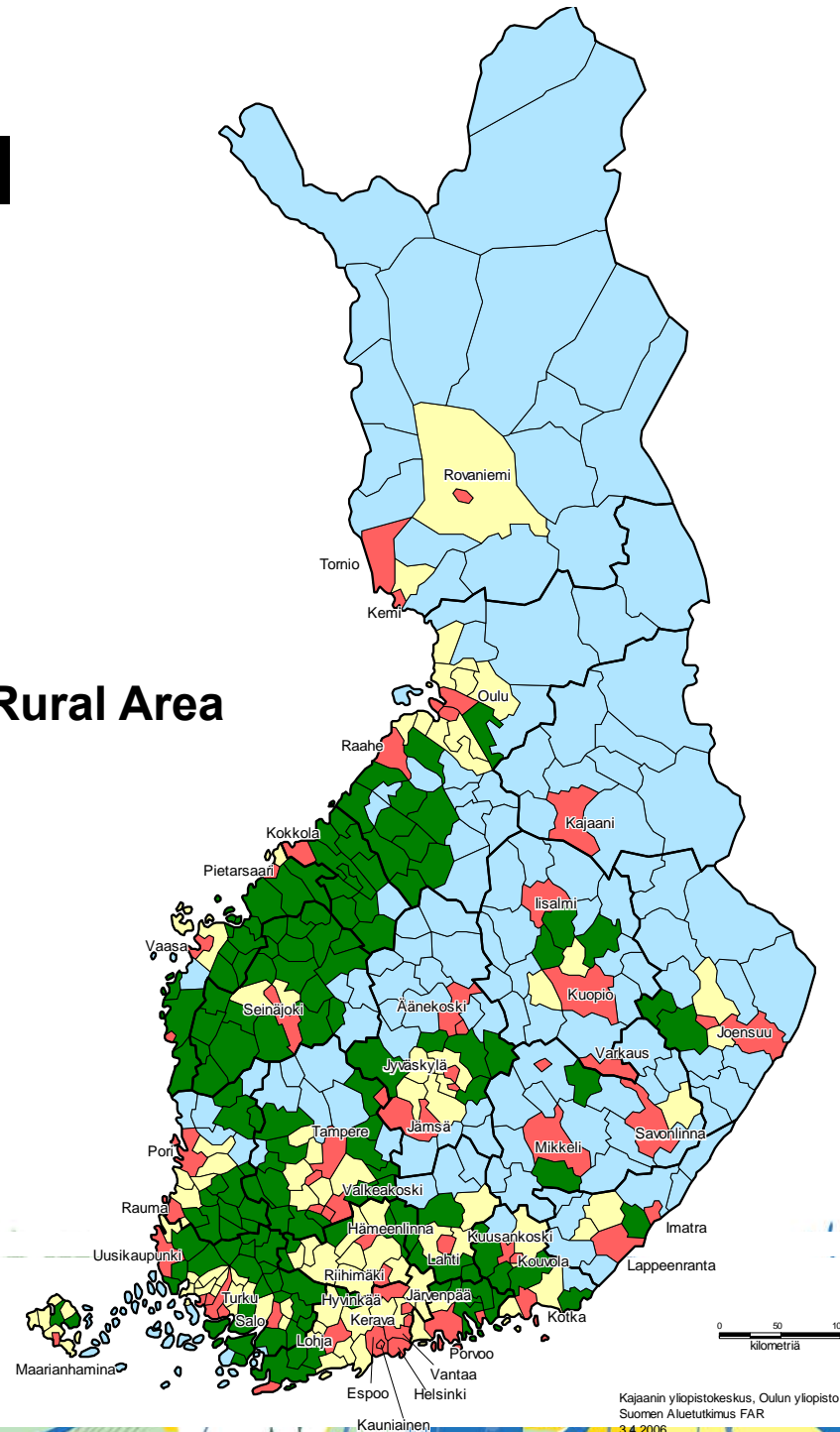
Finland: Types of rural areas

Red: Cities

Yellow: Rural-Urban area

Green: Core Rural Area

Blue: Sparsely Populated Rural Area



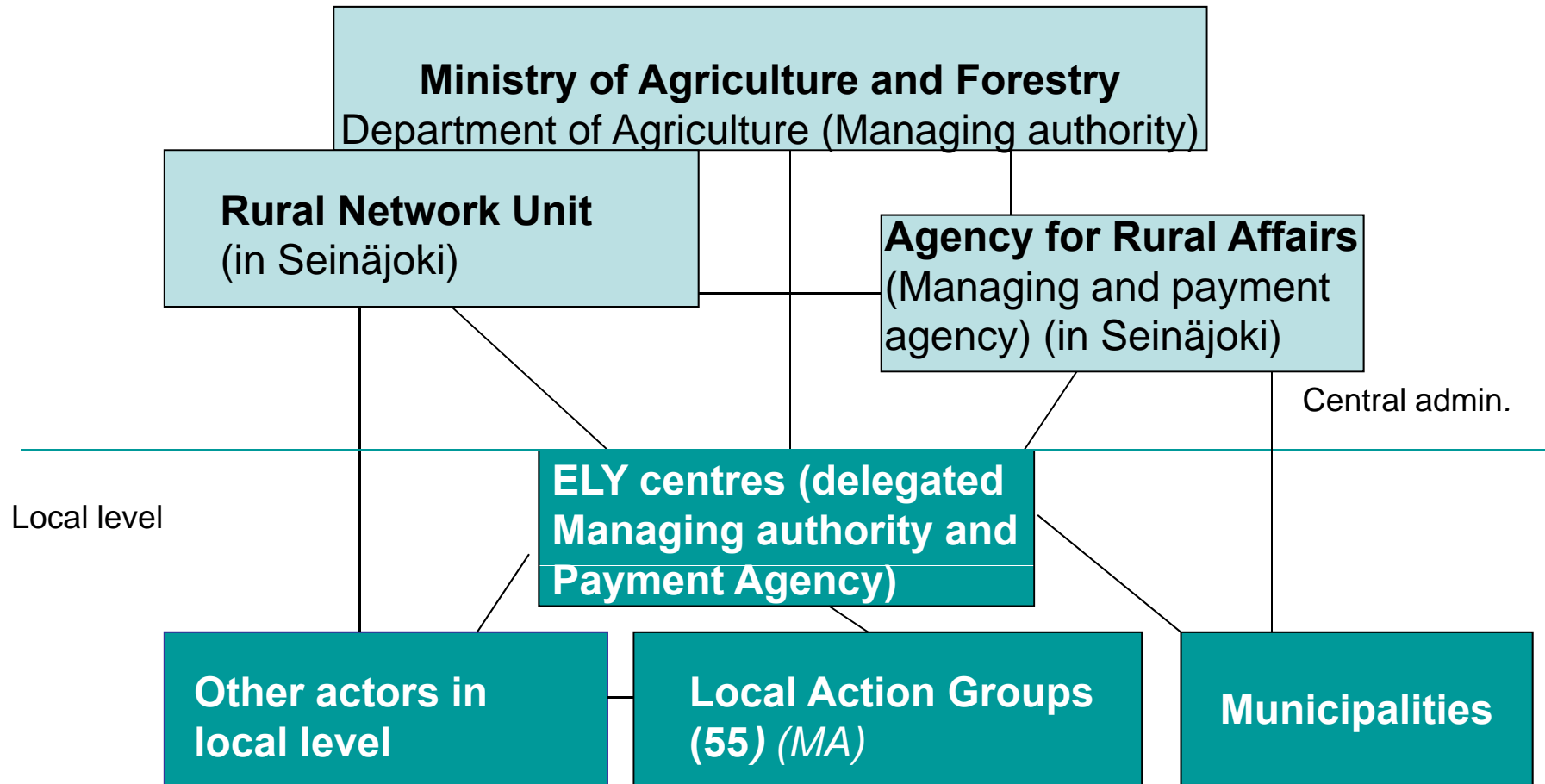
FINLAND - basic information

- population 5,3 million
- area of land 338 145 km²
- 348 municipalities (mainland 332, Åland 16)
- population density is average 17 habitants / km²
- very rural country (according to OECD definition 94 % of territory is rural)
- biggest employers are services and forest industries cluster (economic depression may change this)

14.9.2012



Rural Development Programme for Mainland Finland 2007-2013, Actors



14.9.2012



14.9.2012

Presentation name and author



RDP in Mainland Finland: programme financing

- Programme is funded from the European Agricultural Fund for Rural Development EAFRD and from national funds.
- Public funding for the programme totals about 6.8 billion euros, which is divided by axis as follows:
 - Axis 1: 7.6%
 - Axis 2: 81.6%
 - Axis 3: 6.5%
 - Axis 4: 3.7%

14.9.2012 • Private funding estimated at about 1 billion euros.



Finnish principles for LEADER/LAGs are

- Members in the board of the LAG:
 - 1/3 representatives of municipalities
 - 1/3 local associations and enterprises
 - 1/3 rural inhabitants
- National public funding: municipalities of the LAG area must cover 20 % of total public financing
- All rural area covered with LEADER-methodology
- LEADER is used in all axes of RDP

14.9.2012



LEADER LAG in Finland, approximately

- 7 municipalities/LAG area
- 45 000 inhabitants /LAG area (14 500 95 000)
- 1,5-2 people working in the office of a LAG
- public funding 2,5 - 6,8 meuros/LAG,
private funding 35 % of the total funding

14.9.2012



LEADER: The phases of mainstreaming

<u>Time</u>	<u>Forms</u>	<u>Area</u>
• 1996	22 Leader II groups	1/3 of rural areas
• 1997	26 Pomo groups	1/3 of rural areas
• 2001	25 Leader+ groups	almost 40 % of rural areas
• 2001-2002	26 Alma or Objective 1 groups	almost 50 % of rural areas
• 2001	7 Pomo+ groups	about 10 % of rural areas
• 2002-2006	58 LAGs	almost all rural areas, only 6 rural municipalities outside
• 2007-2013	55+1 LAGs RDPs' in the Mainland Finland and in Åland Islands	All rural areas include to LAGs

14.9.2012



LEADER is an efficient method

- LEADER has been mainstreamed in the rural areas - next steps?
- LEADER should go beyond the rural development - it could also succeed in the urban areas, social and employment actions, etc.
- LEADER should reach still new groups of people to keep openness
- LEADER should focus on issues where it is strongest

14.9.2012



LEADER working group/MAF

- prepares the Finnish positions on the LEADER methodology and local rural development to the Finnish MAF
- prepares a proposal on the implementation of the LEADER methodology
- makes an assessment of the current state of the LEADER results and the added value it has created
- estimates the total implementation costs
- directs the preparation of the local rural development strategies funded from the EAFRD
- chair: MAF, representatives from different ministries, regional authorities, stakeholders, LAGs, researches

14.9.2012



Drivers of success of Leader in Finland

1. Civic activity has been strengthened as a working method (partnership)
2. Assuming responsibility for development will grow when citizens are trusted (free, uncompelled action)
3. Suitable size of Leader action group's area (sub-region)
4. Leader connects citizens, associations and municipalities to work together (joint responsibility)
5. Leader has been mainstreamed as geographic
6. Action is diverse and the funding responds to needs

14.9.2012



Drivers of success of Leader in Finland

7. Leader is cost-effective development work
8. Development of the Leader methodology takes place non-stop (new development projects started)
9. Employees of the LAGs are skilled and good at their work, which ensures profitable action
10. Good results of projects lead to positive consequences
11. Growing internationalisation has positive influence
12. People have started to trust that Leader has come to

14.9.2012 stay



Results

- 55 groups, 15 000 members in associations
- 6 400 projects (55 % development projects, 45 % aids for enterprises)
- comm. 88,6 mill. euros (79 % of the financing frame, excl. axes 2)
- 400 new jobs (50 % women's)
- 560 new enterprises
- 900 village plans
- 42 000 participants in information and activation

14.9.2012 meetings



Possible multi-fund actions?

1/2

Sub-group on local development of the working group on EU's structural and regional policy 2014+

Tasks:

- prepare a proposal for the common principles and implementation models of local community based multi-fund development in Finland
- compile the proposals for the areas of operation of the local action groups and development strategies

14.9.2012



14

Possible multi-fund actions?

2/2

- prepare a proposal for a governance model, selection criteria, role and tasks, and selection committee of the local action groups and development strategies
- examine the criteria for the allocation of funds to local development and their impacts
- chairs: Ministry of Employment and the Economy and Ministry of Agriculture and Forestry,
 - participants from different ministries, regional authorities, ELARD

14.9.2012



Timetable ^{1/2}

- It has been important to initiate the planning of local development strategy at local level before specific instructions:
 - to deepen cooperation between all actors
 - to analyse the region: SWOT ->targets, resources. Opportunities of the multifund approach?
 - operating area?
- political decision, hopefully during the October
- in December 4 seminars: practical implementation of the CLLD model in Finland

14.9.2012



Timetable ^{2/2}

- very first drafts of the local development strategies in the EAFRD by 15 of October 2012 -> just to get local impulses to the RDP 2014-2020
- actual period for applying starts in January 2013?
- multi-step LAG selection procedure will be used

14.9.2012



Analysis

- + good cooperation between ministries: long experience, open discussion
- + preparation organised quite well
- + early start
- lack of knowledge of LEADER
- "local development is good, but LEADER is not: it is an extra administrative level and means more bureaucracy"
- -> political decision of the multi-fund approach is needed

14.9.2012



more information on the Rural Development Programme for Mainland Finland 2007-2013:

www.rural.fi

*Thank you for
your interest!*



14.9.2012



19